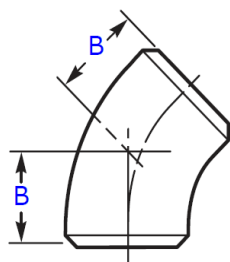


RACCORDI



LONG RADIUS ELBOW 45°

Standard: ASME B16.9



Nominal Pipe Size		Outside Diameter at Bevel, mm	Thickness, mm						Center-to-End, mm
			ASTM A234 WPB / ASTM A420 WPL6 ASTM A403 WP304/304L / ASTM A403 WP316/316L						
DN	Inch		SCH. 40	SCH. 80	SCH. 160	SCH. 10S	SCH. 40S	SCH. 80S	B
15	1/2"	21.3	2.77	3.73	4.78	2.11	2.77	3.73	16
20	3/4"	26.7	2.87	3.91	5.56	2.11	2.87	3.91	19
25	1"	33.4	3.38	4.55	6.35	2.77	3.38	4.55	22
32	1.1/4"	42.2	3.56	4.85	6.35	2.77	3.56	4.85	25
40	1.1/2"	48.3	3.68	5.08	7.14	2.77	3.68	5.08	29
50	2"	60.3	3.91	5.57	8.74	2.77	3.91	5.54	35
65	2.1/2"	73.0	5.16	7.01	9.53	3.05	5.16	7.01	44
80	3"	88.9	5.49	7.62	11.13	3.05	5.49	7.62	51
100	4"	114.3	6.02	8.56	13.49	3.05	6.02	8.56	64
125	5"	141.3	6.55	9.53	15.88	3.40	6.55	9.53	79
150	6"	168.3	7.11	10.97	18.26	3.40	7.11	10.97	95
200	8"	219.1	8.18	12.7	23.01	23,01	8.18	12.7	127
250	10"	273.1	9.27	15.09	28.58	4.19	9.27	12.7	159
300	12"	323.8	10.31	17.48	33.32	4.57	9.53	12.7	190
350	14"	355.6	11.13	19.05	35.71	4.78	9.53	12.7	222
400	16"	406.4	12.7	21.44	40.49	4.78	9.53	12.7	254
450	18"	457.2	14.27	23.83	45.24	4.78	9.53	12.7	286
500	20"	508.0	15.09	26.19	50.01	5.54	9.52	12.7	318
600	24"	609.6	17.48	30.96	59.54	6.35	9.52	12.7	381

Notes:

Other sizes, materials available upon request
 Dimensions are in mm
 Dimensions are indicative and not binding



MICRAMISURE s.r.l.

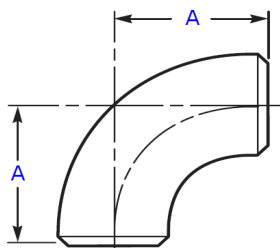
Sede operativa: via Modigliani, 12 - 24020 Gorle (BG) - Sede legale: via Betty Ambiveri, 25 24126 Bergamo

Ph. + 39 02 660 156 90 mail: commerciale@micramisure.it

www.micramisure.it

LONG RADIUS ELBOW 90°

Standard: ASME B16.9



Nominal Pipe Size		Outside Diameter at Bevel, mm	Thickness, mm						Center-to-End, mm
			ASTM A234 WPB / ASTM A420 WPL6 ASTM A403 WP304/304L / ASTM A403 WP316/316L						
DN	Inch		SCH. 40	SCH. 80	SCH. 160	SCH. 10S	SCH. 40S	SCH. 80S	A
15	1/2"	21.3	2.77	3.73	4.78	2.11	2.77	3.73	38
20	3/4"	26.7	2.87	3.91	5.56	2.11	2.87	3.91	38
25	1"	33.4	3.38	4.55	6.35	2.77	3.38	4.55	38
32	1.1/4"	42.2	3.56	4.85	6.35	2.77	3.56	4.85	48
40	1.1/2"	48.3	3.68	5.08	7.14	2.77	3.68	5.08	57
50	2"	60.3	3.91	5.57	8.74	2.77	3.91	5.54	76
65	2.1/2"	73.0	5.16	7.01	9.53	3.05	5.16	7.01	95
80	3"	88.9	5.49	7.62	11.13	3.05	5.49	7.62	114
100	4"	114.3	6.02	8.56	13.49	3.05	6.02	8.56	152
125	5"	141.3	6.55	9.53	15.88	3.40	6.55	9.53	190
150	6"	168.3	7.11	10.97	18.26	3.40	7.11	10.97	229
200	8"	219.1	8.18	12.7	23.01	23,01	8.18	12.7	305
250	10"	273.1	9.27	15.09	28.58	4.19	9.27	12.7	381
300	12"	323.8	10.31	17.48	33.32	4.57	9.53	12.7	457
350	14"	355.6	11.13	19.05	35.71	4.78	9.53	12.7	533
400	16"	406.4	12.7	21.44	40.49	4.78	9.53	12.7	610
450	18"	457.2	14.27	23.83	45.24	4.78	9.53	12.7	686
500	20"	508.0	15.09	26.19	50.01	5.54	9.52	12.7	762
600	24"	609.6	17.48	30.96	59.54	6.35	9.52	12.7	914

Notes:

Other sizes, materials available upon request
 Dimensions are in mm
 Dimensions are indicative and not binding



MICRAMISURE s.r.l.

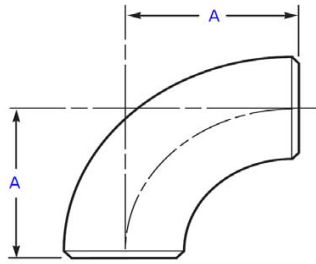
Sede operativa: via Modigliani, 12 - 24020 Gorle (BG) - Sede legale: via Betty Ambiveri, 25 24126 Bergamo

Ph. + 39 02 660 156 90 mail: commerciale@micramisure.it

www.micramisure.it

SHORT RADIUS ELBOW 90°

Standard: ASME B16.9



Nominal Pipe Size		Outside Diameter at Bevel, mm	Thickness, mm						Center-to-End, mm
			ASTM A234 WPB / ASTM A420 WPL6 ASTM A403 WP304/304L / ASTM A403 WP316/316L						
DN	Inch		SCH. 40	SCH. 80	SCH. 160	SCH. 10S	SCH. 40S	SCH. 80S	A
w	1"	33.4	3.38	4.55	6.35	2.77	3.38	4.55	25
32	1.1/4"	42.2	3.56	4.85	6.35	2.77	3.56	4.85	32
40	1.1/2"	48.3	3.68	5.08	7.14	2.77	3.68	5.08	38
50	2"	60.3	3.91	5.57	8.74	2.77	3.91	5.54	51
65	2.1/2"	73.0	5.16	7.01	9.53	3.05	5.16	7.01	64
80	3"	88.9	5.49	7.62	11.13	3.05	5.49	7.62	76
100	4"	114.3	6.02	8.56	13.49	3.05	6.02	8.56	102
125	5"	141.3	6.55	9.53	15.88	3.40	6.55	9.53	127
150	6"	168.3	7.11	10.97	18.26	3.40	7.11	10.97	152
200	8"	219.1	8.18	12.7	23.01	23,01	8.18	12.7	203
250	10"	273.1	9.27	15.09	28.58	4.19	9.27	12.7	254
300	12"	323.8	10.31	17.48	33.32	4.57	9.53	12.7	305
350	14"	355.6	11.13	19.05	35.71	4.78	9.53	12.7	356
400	16"	406.4	12.7	21.44	40.49	4.78	9.53	12.7	406
450	18"	457.2	14.27	23.83	45.24	4.78	9.53	12.7	457
500	20"	508.0	15.09	26.19	50.01	5.54	9.52	12.7	508
600	24"	609.6	17.48	30.96	59.54	6.35	9.52	12.7	610

Notes:

Other sizes, materials available upon request

Dimensions are in mm

Dimensions are indicative and not binding



MICRAMISURE s.r.l.

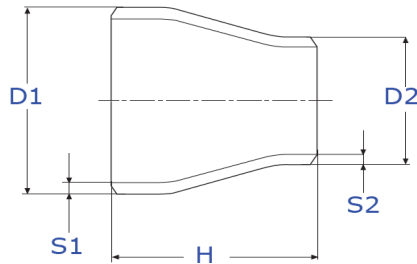
Sede operativa: via Modigliani, 12 - 24020 Gorle (BG) - Sede legale: via Betty Ambiveri, 25 24126 Bergamo

Ph. + 39 02 660 156 90 mail: commerciale@micramisure.it

www.micramisure.it

CONCENTRIC REDUCER

Standard: ASME B16.9



Nominal Pipe Size		Outside Diameter at Bevel, mm		Thickness, mm												End-to-End, mm
				ASTM A234 WPB / ASTM A420 WPL6 ASTM A403 WP304/304L / ASTM A403 WP316/316L												
D1	D2	D1	D2	SCH. 40		SCH. 80		SCH. 160		SCH. 10S		SCH. 40S		SCH. 80S		H
				D1	D2	D1	D2	D1	D2	D1	D2	D1	D2	D1	D2	
3/4"	1/2"	26.7	21.3	2.87	2.77	3.91	3.73	5.56	4.78	2.11	2.11	2.87	2.77	3.91	3.73	38
1"	1/2"	33.4	21.3	3.38	2.77	4.55	3.73	6.35	4.78	2.77	2.11	3.38	2.77	4.55	3.73	51
1"	3/4"	33.4	26.7	3.38	2.87	4.55	3.91	6.35	5.56	2.77	2.11	3.38	2.87	4.55	3.91	51
1.1/4"	3/4"	42.2	26.7	3.56	2.87	4.85	3.91	6.35	5.56	2.77	2.11	3.56	2.87	4.85	3.91	51
1.1/4"	1"	42.2	33.4	3.56	3.38	4.85	4.55	6.35	6.35	2.77	2.77	3.56	3.38	4.85	4.55	51
1.1/2"	3/4"	48.3	26.7	3.68	2.87	5.08	3.91	7.14	5.56	2.77	2.11	3.68	2.87	5.08	3.91	64
1.1/2"	1"	48.3	33.4	3.68	3.38	5.08	4.55	7.14	6.35	2.77	2.77	3.68	3.38	5.08	4.55	64
1.1/2"	1.1/4"	48.3	42.2	3.68	3.56	5.08	4.85	7.14	6.35	2.77	2.77	3.68	3.56	5.08	4.85	64
2"	3/4"	60.3	26.7	3.91	2.87	5.57	3.91	8.74	5.56	2.77	2.11	3.91	2.87	5.54	3.91	76
2"	1"	60.3	33.4	3.91	3.38	5.57	4.55	8.74	6.35	2.77	2.77	3.91	3.38	5.54	4.55	76
2"	1.1/4"	60.3	42.2	3.91	3.56	5.57	4.85	8.74	6.35	2.77	2.77	3.91	3.56	5.54	4.85	76
2"	1.1/2"	60.3	48.3	3.91	3.68	5.57	5.08	8.74	7.14	2.77	2.77	3.91	3.68	5.54	5.08	76
2.1/2"	1"	73.0	33.4	5.16	3.38	7.01	4.55	9.53	6.35	3.05	2.77	5.16	3.38	7.01	4.55	89
2.1/2"	1.1/4"	73.0	42.2	5.16	3.56	7.01	4.85	9.53	6.35	3.05	2.77	5.16	3.56	7.01	4.85	89
2.1/2"	1.1/2"	73.0	48.3	5.16	3.68	7.01	5.08	9.53	7.14	3.05	2.77	5.16	3.68	7.01	5.08	89
2.1/2"	2"	73.0	60.3	5.16	3.91	7.01	5.57	9.53	8.74	3.05	2.77	5.16	3.91	7.01	5.54	89
3"	1"	88.9	33.4	5.49	3.38	7.62	4.55	11.13	6.35	3.05	2.77	5.49	3.38	7.62	4.55	89
3"	1.1/4"	88.9	42.2	5.49	3.56	7.62	4.85	11.13	6.35	3.05	2.77	5.49	3.56	7.62	4.85	89
3"	1.1/2"	88.9	48.3	5.49	3.68	7.62	5.08	11.13	7.14	3.05	2.77	5.49	3.68	7.62	5.08	89
3"	2"	88.9	60.3	5.49	3.91	7.62	5.57	11.13	8.74	3.05	2.77	5.49	3.91	7.62	5.54	89
3"	2.1/2"	88.9	73.0	5.49	5.16	7.62	7.01	11.13	9.53	3.05	3.05	5.49	5.16	7.62	7.01	89
4"	1.1/2"	114.3	48.3	6.02	3.68	8.56	5.08	13.49	7.14	3.05	2.77	6.02	3.68	8.56	5.08	102
4"	2"	114.3	60.3	6.02	3.91	8.56	5.57	13.49	8.74	3.05	2.77	6.02	3.91	8.56	5.54	102
4"	2.1/2"	114.3	73.0	6.02	5.16	8.56	7.01	13.49	9.53	3.05	3.05	6.02	5.16	8.56	7.01	102
4"	3"	114.3	88.9	6.02	5.49	8.56	7.62	13.49	11.13	3.05	3.05	6.02	5.49	8.56	7.62	102

Notes:

Other sizes, materials available upon request
 Dimensions are in mm
 Dimensions are indicative and not binding



MICRAMISURE s.r.l.

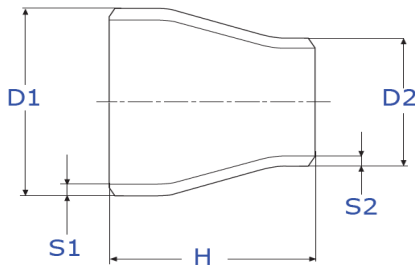
Sede operativa: via Modigliani, 12 - 24020 Gorle (BG) - Sede legale: via Betty Ambiveri, 25 24126 Bergamo

Ph. + 39 02 660 156 90 mail: commerciale@micramisure.it

www.micramisure.it

CONCENTRIC REDUCER

Standard: ASME B16.9



Nominal Pipe Size		Outside Diameter at Bevel, mm		Thickness, mm												End-to-End, mm
				ASTM A234 WPB / ASTM A420 WPL6 ASTM A403 WP304/304L / ASTM A403 WP316/316L												
D1	D2	D1	D2	SCH. 40		SCH. 80		SCH. 160		SCH. 10S		SCH. 40S		SCH. 80S		H
				D1	D2	D1	D2	D1	D2	D1	D2	D1	D2	D1	D2	
5"	3"	141.3	88.9	6.55	5.49	9.53	7.62	15.88	11.13	3.40	3.05	6.55	5.49	9.53	7.62	127
5"	4"	141.3	114.3	6.55	6.02	9.53	8.56	15.88	13.49	3.40	3.05	6.55	6.02	9.53	8.56	127
6"	3"	168.3	88.9	7.11	5.49	10.97	7.62	18.26	11.13	3.40	3.05	7.11	5.49	10.97	7.62	140
6"	4"	168.3	114.3	7.11	6.02	10.97	8.56	18.26	13.49	3.40	3.05	7.11	6.02	10.97	8.56	140
6"	5"	168.3	141.3	7.11	6.55	10.97	9.53	18.26	15.88	3.40	3.40	7.11	6.55	10.97	9.53	140
8"	4"	219.1	114.3	8.18	6.02	12.7	8.56	23.01	13.49	23,01	3.05	8.18	6.02	12.7	8.56	152
8"	5"	219.1	141.3	8.18	6.55	12.7	9.53	23.01	15.88	23,01	3.40	8.18	6.55	12.7	9.53	152
8"	6"	219.1	168.3	8.18	7.11	12.7	10.97	23.01	18.26	23,01	3.40	8.18	7.11	12.7	10.97	152
10"	6"	273.1	168.3	9.27	7.11	15.09	10.97	28.58	18.26	4.19	3.40	9.27	7.11	12.7	10.97	178
10"	8"	273.1	219.1	9.27	8.18	15.09	12.7	28.58	23.01	4.19	23,01	9.27	8.18	12.7	12.7	178
12"	6"	323.8	168.3	10.31	7.11	17.48	10.97	33.32	18.26	4.57	3.40	9.53	7.11	12.7	10.97	203
12"	8"	323.8	219.1	10.31	8.18	17.48	12.7	33.32	23.01	4.57	23,01	9.53	8.18	12.7	12.7	203
12"	10"	323.8	273.1	10.31	9.27	17.48	15.09	33.32	28.58	4.57	4.19	9.53	9.27	12.7	12.7	203

Notes:

Other sizes, materials available upon request

Dimensions are in mm

Dimensions are indicative and not binding



MICRAMISURE s.r.l.

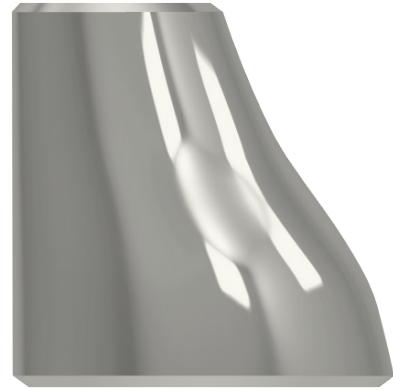
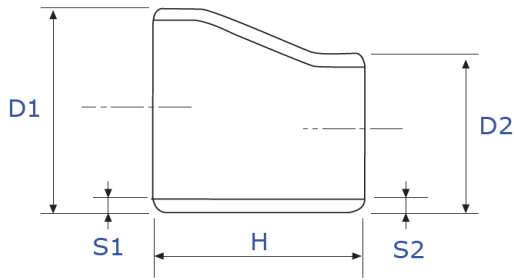
Sede operativa: via Modigliani, 12 - 24020 Gorle (BG) - Sede legale: via Betty Ambiveri, 25 24126 Bergamo

Ph. + 39 02 660 156 90 mail: commerciale@micramisure.it

www.micramisure.it

ECCENTRIC REDUCER

Standard: ASME B16.9



Nominal Pipe Size		Outside Diameter at Bevel, mm		Thickness, mm												End-to-End, mm
				ASTM A234 WPB / ASTM A420 WPL6 ASTM A403 WP304/304L / ASTM A403 WP316/316L												
D1	D2	D1	D2	SCH. 40		SCH. 80		SCH. 160		SCH. 10S		SCH. 40S		SCH. 80S		H
				D1	D2	D1	D2	D1	D2	D1	D2	D1	D2	D1	D2	
3/4"	1/2"	26.7	21.3	2.87	2.77	3.91	3.73	5.56	4.78	2.11	2.11	2.87	2.77	3.91	3.73	38
1"	1/2"	33.4	21.3	3.38	2.77	4.55	3.73	6.35	4.78	2.77	2.11	3.38	2.77	4.55	3.73	51
1"	3/4"	33.4	26.7	3.38	2.87	4.55	3.91	6.35	5.56	2.77	2.11	3.38	2.87	4.55	3.91	51
1.1/4"	3/4"	42.2	26.7	3.56	2.87	4.85	3.91	6.35	5.56	2.77	2.11	3.56	2.87	4.85	3.91	51
1.1/4"	1"	42.2	33.4	3.56	3.38	4.85	4.55	6.35	6.35	2.77	2.77	3.56	3.38	4.85	4.55	51
1.1/2"	3/4"	48.3	26.7	3.68	2.87	5.08	3.91	7.14	5.56	2.77	2.11	3.68	2.87	5.08	3.91	64
1.1/2"	1"	48.3	33.4	3.68	3.38	5.08	4.55	7.14	6.35	2.77	2.77	3.68	3.38	5.08	4.55	64
1.1/2"	1.1/4"	48.3	42.2	3.68	3.56	5.08	4.85	7.14	6.35	2.77	2.77	3.68	3.56	5.08	4.85	64
2"	3/4"	60.3	26.7	3.91	2.87	5.57	3.91	8.74	5.56	2.77	2.11	3.91	2.87	5.54	3.91	76
2"	1"	60.3	33.4	3.91	3.38	5.57	4.55	8.74	6.35	2.77	2.77	3.91	3.38	5.54	4.55	76
2"	1.1/4"	60.3	42.2	3.91	3.56	5.57	4.85	8.74	6.35	2.77	2.77	3.91	3.56	5.54	4.85	76
2"	1.1/2"	60.3	48.3	3.91	3.68	5.57	5.08	8.74	7.14	2.77	2.77	3.91	3.68	5.54	5.08	76
2.1/2"	1"	73.0	33.4	5.16	3.38	7.01	4.55	9.53	6.35	3.05	2.77	5.16	3.38	7.01	4.55	89
2.1/2"	1.1/4"	73.0	42.2	5.16	3.56	7.01	4.85	9.53	6.35	3.05	2.77	5.16	3.56	7.01	4.85	89
2.1/2"	1.1/2"	73.0	48.3	5.16	3.68	7.01	5.08	9.53	7.14	3.05	2.77	5.16	3.68	7.01	5.08	89
2.1/2"	2"	73.0	60.3	5.16	3.91	7.01	5.57	9.53	8.74	3.05	2.77	5.16	3.91	7.01	5.54	89
3"	1"	88.9	33.4	5.49	3.38	7.62	4.55	11.13	6.35	3.05	2.77	5.49	3.38	7.62	4.55	89
3"	1.1/4"	88.9	42.2	5.49	3.56	7.62	4.85	11.13	6.35	3.05	2.77	5.49	3.56	7.62	4.85	89
3"	1.1/2"	88.9	48.3	5.49	3.68	7.62	5.08	11.13	7.14	3.05	2.77	5.49	3.68	7.62	5.08	89
3"	2"	88.9	60.3	5.49	3.91	7.62	5.57	11.13	8.74	3.05	2.77	5.49	3.91	7.62	5.54	89
3"	2.1/2"	88.9	73.0	5.49	5.16	7.62	7.01	11.13	9.53	3.05	3.05	5.49	5.16	7.62	7.01	89
4"	1.1/2"	114.3	48.3	6.02	3.68	8.56	5.08	13.49	7.14	3.05	2.77	6.02	3.68	8.56	5.08	102
4"	2"	114.3	60.3	6.02	3.91	8.56	5.57	13.49	8.74	3.05	2.77	6.02	3.91	8.56	5.54	102
4"	2.1/2"	114.3	73.0	6.02	5.16	8.56	7.01	13.49	9.53	3.05	3.05	6.02	5.16	8.56	7.01	102
4"	3"	114.3	88.9	6.02	5.49	8.56	7.62	13.49	11.13	3.05	3.05	6.02	5.49	8.56	7.62	102

Notes:

Other sizes, materials available upon request
 Dimensions are in mm
 Dimensions are indicative and not binding



MICRAMISURE s.r.l.

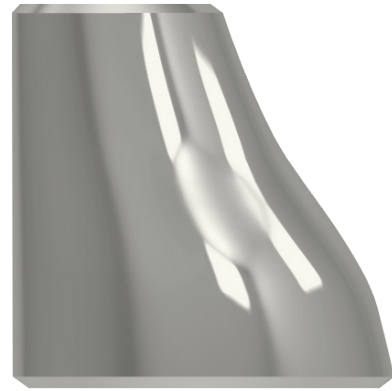
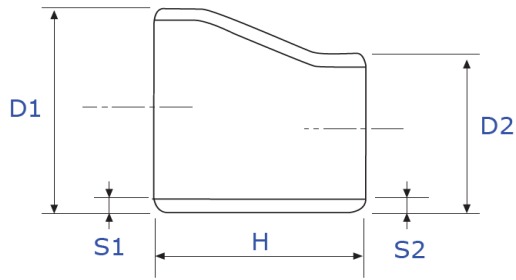
Sede operativa: via Modigliani, 12 - 24020 Gorle (BG) - Sede legale: via Betty Ambiveri, 25 24126 Bergamo

Ph. + 39 02 660 156 90 mail: commerciale@micramisure.it

www.micramisure.it

ECCENTRIC REDUCER

Standard: ASME B16.9



Nominal Pipe Size		Outside Diameter at Bevel, mm		Thickness, mm												End-to-End, mm
				ASTM A234 WPB / ASTM A420 WPL6 ASTM A403 WP304/304L / ASTM A403 WP316/316L												
D1	D2	D1	D2	SCH. 40		SCH. 80		SCH. 160		SCH. 10S		SCH. 40S		SCH. 80S		H
				D1	D2	D1	D2	D1	D2	D1	D2	D1	D2	D1	D2	
5"	3"	141.3	88.9	6.55	5.49	9.53	7.62	15.88	11.13	3.40	3.05	6.55	5.49	9.53	7.62	127
5"	4"	141.3	114.3	6.55	6.02	9.53	8.56	15.88	13.49	3.40	3.05	6.55	6.02	9.53	8.56	127
6"	3"	168.3	88.9	7.11	5.49	10.97	7.62	18.26	11.13	3.40	3.05	7.11	5.49	10.97	7.62	140
6"	4"	168.3	114.3	7.11	6.02	10.97	8.56	18.26	13.49	3.40	3.05	7.11	6.02	10.97	8.56	140
6"	5"	168.3	141.3	7.11	6.55	10.97	9.53	18.26	15.88	3.40	3.40	7.11	6.55	10.97	9.53	140
8"	4"	219.1	114.3	8.18	6.02	12.7	8.56	23.01	13.49	23.01	3.05	8.18	6.02	12.7	8.56	152
8"	5"	219.1	141.3	8.18	6.55	12.7	9.53	23.01	15.88	23.01	3.40	8.18	6.55	12.7	9.53	152
8"	6"	219.1	168.3	8.18	7.11	12.7	10.97	23.01	18.26	23.01	3.40	8.18	7.11	12.7	10.97	152
10"	6"	273.1	168.3	9.27	7.11	15.09	10.97	28.58	18.26	4.19	3.40	9.27	7.11	12.7	10.97	178
10"	8"	273.1	219.1	9.27	8.18	15.09	12.7	28.58	23.01	4.19	23.01	9.27	8.18	12.7	12.7	178
12"	6"	323.8	168.3	10.31	7.11	17.48	10.97	33.32	18.26	4.57	3.40	9.53	7.11	12.7	10.97	203
12"	8"	323.8	219.1	10.31	8.18	17.48	12.7	33.32	23.01	4.57	23.01	9.53	8.18	12.7	12.7	203
12"	10"	323.8	273.1	10.31	9.27	17.48	15.09	33.32	28.58	4.57	4.19	9.53	9.27	12.7	12.7	203

Notes:

Other sizes, materials available upon request

Dimensions are in mm

Dimensions are indicative and not binding



MICRAMISURE s.r.l.

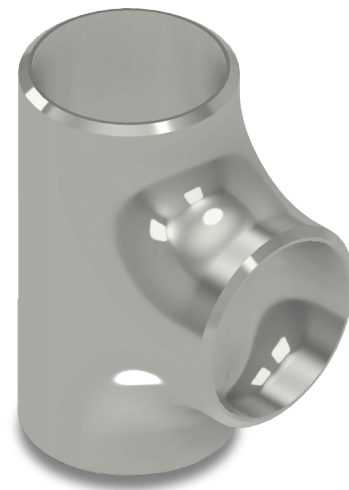
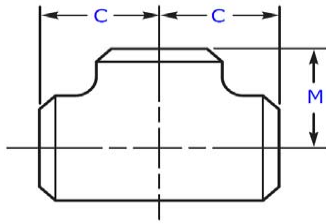
Sede operativa: via Modigliani, 12 - 24020 Gorle (BG) - Sede legale: via Betty Ambiveri, 25 24126 Bergamo

Ph. + 39 02 660 156 90 mail: commerciale@micramisure.it

www.micramisure.it

STRAIGHT TEE

Standard: ASME B16.9



Nominal Pipe Size		Outside Diameter at Bevel	Thickness, mm						Center-to-End, mm	
			ASTM A234 WPB / ASTM A420 WPL6 ASTM A403 WP304/304L / ASTM A403 WP316/316L							
DN	Inch	mm	SCH. 40	SCH. 80	SCH. 160	SCH. 10S	SCH. 40S	SCH. 80S	Run, C	Outlet, M
15	1/2"	21.3	2.77	3.73	4.78	2.11	2.77	3.73	25	25
20	3/4"	26.7	2.87	3.91	5.56	2.11	2.87	3.91	29	29
25	1"	33.4	3.38	4.55	6.35	2.77	3.38	4.55	38	38
32	1.1/4"	42.2	3.56	4.85	6.35	2.77	3.56	4.85	48	48
40	1.1/2"	48.3	3.68	5.08	7.14	2.77	3.68	5.08	57	57
50	2"	60.3	3.91	5.57	8.74	2.77	3.91	5.54	64	64
65	2.1/2"	73.0	5.16	7.01	9.53	3.05	5.16	7.01	76	76
80	3"	88.9	5.49	7.62	11.13	3.05	5.49	7.62	86	86
100	4"	114.3	6.02	8.56	13.49	3.05	6.02	8.56	105	105
125	5"	141.3	6.55	9.53	15.88	3.40	6.55	9.53	124	124
150	6"	168.3	7.11	10.97	18.26	3.40	7.11	10.97	153	153
200	8"	219.1	8.18	12.7	23.01	23,01	8.18	12.7	178	178
250	10"	273.1	9.27	15.09	28.58	4.19	9.27	12.7	216	216
300	12"	323.8	10.31	17.48	33.32	4.57	9.53	12.7	254	254
350	14"	355.6	11.13	19.05	35.71	4.78	9.53	12.7	279	279
400	16"	406.4	12.7	21.44	40.49	4.78	9.53	12.7	305	305
450	18"	457.2	14.27	23.83	45.24	4.78	9.53	12.7	343	343
500	20"	508.0	15.09	26.19	50.01	5.54	9.52	12.7	381	381
600	24"	609.6	17.48	30.96	59.54	6.35	9.52	12.7	432	432

Notes:

Other sizes, materials available upon request
 Dimensions are in mm
 Dimensions are indicative and not binding



MICRAMISURE s.r.l.

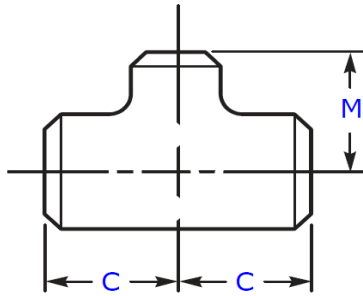
Sede operativa: via Modigliani, 12 - 24020 Gorle (BG) - Sede legale: via Betty Ambiveri, 25 24126 Bergamo

Ph. + 39 02 660 156 90 mail: commerciale@micramisure.it

www.micramisure.it

REDUCING TEE

Standard: ASME B16.9



Nominal Pipe Size, Inch		Outside Diameter at Bevel, mm		Thickness, mm												End-to-End, mm	
				ASTM A234 WPB / ASTM A420 WPL6 ASTM A403 WP304/304L / ASTM A403 WP316/316L													
Run	Outlet	Run	Outlet	SCH. 40		SCH. 80		SCH. 160		SCH. 10S		SCH. 40S		SCH. 80S		Run, C	Outlet, M
				Run	Outlet	Run	Outlet	Run	Outlet	Run	Outlet	Run	Outlet	Run	Outlet		
3/4"	1/2"	26.7	21.3	2.87	2.77	3.91	3.73	5.56	4.78	2.11	2.11	2.87	2.77	3.91	3.73	29	29
1"	1/2"	33.4	21.3	3.38	2.77	4.55	3.73	6.35	4.78	2.77	2.11	3.38	2.77	4.55	3.73	38	38
1"	3/4"	33.4	26.7	3.38	2.87	4.55	3.91	6.35	5.56	2.77	2.11	3.38	2.87	4.55	3.91	38	38
1.1/4"	3/4"	42.2	26.7	3.56	2.87	4.85	3.91	6.35	5.56	2.77	2.11	3.56	2.87	4.85	3.91	48	48
1.1/4"	1"	42.2	33.4	3.56	3.38	4.85	4.55	6.35	6.35	2.77	2.77	3.56	3.38	4.85	4.55	48	48
1.1/2"	1/2"	48.3	21.3	3.68	2.77	5.08	3.73	7.14	4.78	2.77	2.11	3.68	2.77	5.08	3.73	57	57
1.1/2"	3/4"	48.3	26.7	3.68	2.87	5.08	3.91	7.14	5.56	2.77	2.11	3.68	2.87	5.08	3.91	57	57
1.1/2"	1"	48.3	33.4	3.68	3.38	5.08	4.55	7.14	6.35	2.77	2.77	3.68	3.38	5.08	4.55	57	57
1.1/2"	1.1/4"	48.3	42.2	3.68	3.56	5.08	4.85	7.14	6.35	2.77	2.77	3.68	3.56	5.08	4.85	57	57
2"	3/4"	60.3	26.7	3.91	2.87	5.57	3.91	8.74	5.56	2.77	2.11	3.91	2.87	5.54	3.91	64	44
2"	1"	60.3	33.4	3.91	3.38	5.57	4.55	8.74	6.35	2.77	2.77	3.91	3.38	5.54	4.55	64	51
2"	1.1/4"	60.3	42.2	3.91	3.56	5.57	4.85	8.74	6.35	2.77	2.77	3.91	3.56	5.54	4.85	64	57
2"	1.1/2"	60.3	48.3	3.91	3.68	5.57	5.08	8.74	7.14	2.77	2.77	3.91	3.68	5.54	5.08	64	60
2.1/2"	1"	73.0	33.4	5.16	3.38	7.01	4.55	9.53	6.35	3.05	2.77	5.16	3.38	7.01	4.55	76	57
2.1/2"	1.1/2"	73.0	48.3	5.16	3.68	7.01	5.08	9.53	7.14	3.05	2.77	5.16	3.68	7.01	5.08	76	67
2.1/2"	2"	73.0	60.3	5.16	3.91	7.01	5.57	9.53	8.74	3.05	2.77	5.16	3.91	7.01	5.54	76	70
3"	1"	88.9	33.4	5.49	3.38	7.62	4.55	11.13	6.35	3.05	2.77	5.49	3.38	7.62	4.55	86	67
3"	1.1/2"	88.9	48.3	5.49	3.68	7.62	5.08	11.13	7.14	3.05	2.77	5.49	3.68	7.62	5.08	86	73
3"	2"	88.9	60.3	5.49	3.91	7.62	5.57	11.13	8.74	3.05	2.77	5.49	3.91	7.62	5.54	86	76
3"	2.1/2"	88.9	73.0	5.49	5.16	7.62	7.01	11.13	9.53	3.05	3.05	5.49	5.16	7.62	7.01	86	83
4"	2"	114.3	60.3	6.02	3.91	8.56	5.57	13.49	8.74	3.05	2.77	6.02	3.91	8.56	5.54	105	89
4"	2.1/2"	114.3	73.0	6.02	5.16	8.56	7.01	13.49	9.53	3.05	3.05	6.02	5.16	8.56	7.01	105	95
4"	3"	114.3	88.9	6.02	5.49	8.56	7.62	13.49	11.13	3.05	3.05	6.02	5.49	8.56	7.62	105	98

Notes:

Other sizes, materials available upon request
 Dimensions are in mm
 Dimensions are indicative and not binding



MICRAMISURE s.r.l.

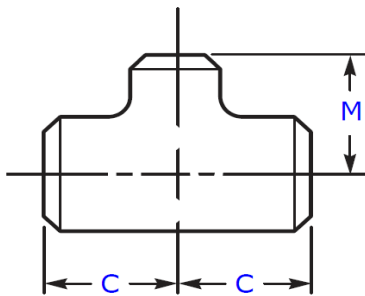
Sede operativa: via Modigliani, 12 - 24020 Gorle (BG) - Sede legale: via Betty Ambiveri, 25 24126 Bergamo

Ph. + 39 02 660 156 90 mail: commerciale@micramisure.it

www.micramisure.it

REDUCING TEE

Standard: ASME B16.9



Nominal Pipe Size, Inch		Outside Diameter at Bevel, mm		Thickness, mm												End-to-End, mm	
				ASTM A234 WPB / ASTM A420 WPL6 ASTM A403 WP304/304L / ASTM A403 WP316/316L													
Run	Outlet	Run	Outlet	SCH. 40		SCH. 80		SCH. 160		SCH. 10S		SCH. 40S		SCH. 80S		Run, C	Outlet, M
				Run	Outlet	Run	Outlet	Run	Outlet	Run	Outlet	Run	Outlet	Run	Outlet		
5"	3"	141.3	88.9	6.55	5.49	9.53	7.62	15.88	11.13	3.40	3.05	6.55	5.49	9.53	7.62	124	111
5"	4"	141.3	114.3	6.55	6.02	9.53	8.56	15.88	13.49	3.40	3.05	6.55	6.02	9.53	8.56	124	117
6"	3"	168.3	88.9	7.11	5.49	10.97	7.62	18.26	11.13	3.40	3.05	7.11	5.49	10.97	7.62	143	124
6"	4"	168.3	114.3	7.11	6.02	10.97	8.56	18.26	13.49	3.40	3.05	7.11	6.02	10.97	8.56	143	130
8"	4"	219.1	114.3	8.18	6.02	12.7	8.56	23.01	13.49	23,01	3.05	8.18	6.02	12.7	8.56	178	156
8"	5"	219.1	141.3	8.18	6.55	12.7	9.53	23.01	15.88	23,01	3.40	8.18	6.55	12.7	9.53	178	162
8"	6"	219.1	168.3	8.18	7.11	12.7	10.97	23.01	18.26	23,01	3.40	8.18	7.11	12.7	10.97	178	168
10"	5"	273.1	141.3	9.27	6.55	15.09	9.53	28.58	15.88	4.19	3.40	9.27	6.55	12.7	9.53	216	191
10"	6"	273.1	168.3	9.27	7.11	15.09	10.97	28.58	18.26	4.19	3.40	9.27	7.11	12.7	10.97	216	194
10"	8"	273.1	219.1	9.27	8.18	15.09	12.7	28.58	23.01	4.19	23,01	9.27	8.18	12.7	12.7	216	203
12"	6"	323.8	168.3	10.31	7.11	17.48	10.97	33.32	18.26	4.57	3.40	9.53	7.11	12.7	10.97	254	219
12"	8"	323.8	219.1	10.31	8.18	17.48	12.7	33.32	23.01	4.57	23,01	9.53	8.18	12.7	12.7	254	229
12"	10"	323.8	273.1	10.31	9.27	17.48	15.09	33.32	28.58	4.57	4.19	9.53	9.27	12.7	12.7	254	241

Notes:

Other sizes, materials available upon request

Dimensions are in mm

Dimensions are indicative and not binding



MICRAMISURE s.r.l.

Sede operativa: via Modigliani, 12 - 24020 Gorle (BG) - Sede legale: via Betty Ambiveri, 25 24126 Bergamo

Ph. + 39 02 660 156 90 mail: commerciale@micramisure.it

www.micramisure.it



MICRAMISURE s.r.l.

Sede operativa: via Modigliani, 12 - 24020 Gorle (BG) - Sede legale: via Betty Ambiveri, 25 24126 Bergamo

Ph. + 39 02 660 156 90 mail: commerciale@micramisure.it

www.micramisure.it